

# FEATURECAM 2006

www.featurecam.com

## Feature-Based Technology Streamlines CAD/CAM

With FeatureCAM, you

1. Draw or import your part
2. Identify part components as features (holes, pockets, surface milling, etc.)
3. Click simulation

**You are done! NC Code is generated!**

## Knowledge-Based Technology Increases Productivity

FeatureCAM automatically

- Selects Tools
- Calculates Feeds and Speeds, including Stepovers and Depth of Cut
- Determines Roughing and Finishing Operations
- Generates Toolpaths and NC Code

**You determine the amount of automation you prefer, and you can change any of the automatically selected machining suggestions!**

## FeatureCAM Gives You Added Value at No Additional Charge

FeatureCAM includes

- Extensive Post Processor Library, with the Ability to Create Custom Posts or Edit Existing Posts
- Feed Rate Optimization
- Application Programming Interface (API) for Macro Creation and Program Customizations
- Job Quoting Documentation
- Integrated 3D Simulation Package

## Give Yourself the POWER

FeatureMILL2.5D

FeatureMILL3D

FeatureTURN

FeatureTURN/MILL

FeatureWIRE

FeatureRECOGNITION

Solid Modeling

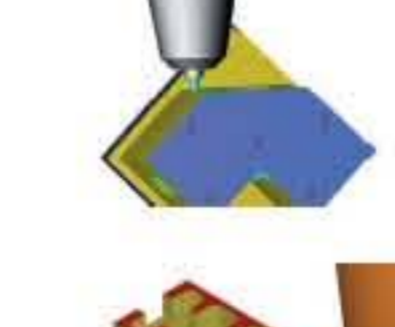
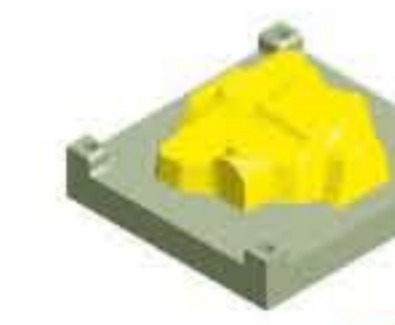
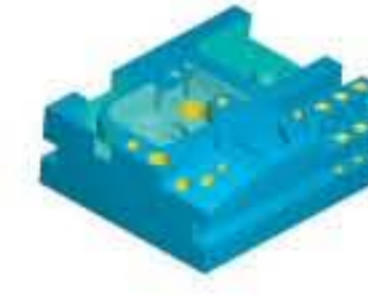
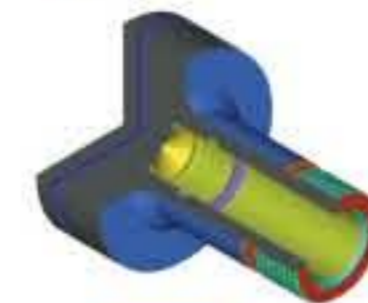
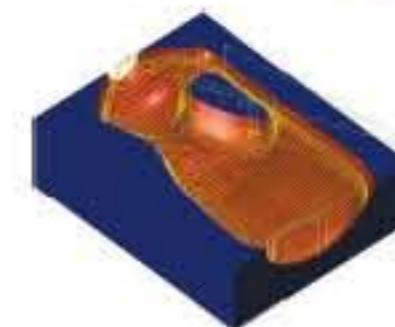
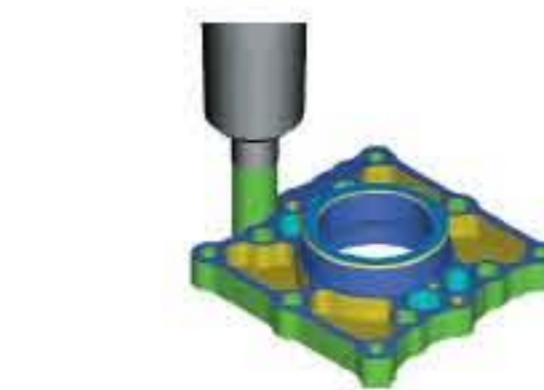
Multi-Turret Turning

Machine Simulation

Tombstone Machining

5 Axis Positioning

Native CAD Imports



### FeatureMILL2.5D®

FeatureMILL2.5D incorporates all the power and ease of use that are part of every FeatureCAM product, including step-by-step wizards and the ability to import industry-standard IGES, DWG and DXF files. FeatureMILL2.5D includes 4th axis wrapping and indexing capabilities.

### FeatureMILL3D®

FeatureMILL3D includes all the functionality of FeatureMILL2.5D and FeatureRECOGNITION, plus wizards that walk you through contour modeling and a large variety of advanced gouge-free toolpath techniques for traditional and high speed machining.

### FeatureTURN®

FeatureTURN supports 2-axis turning, including sub-spindles, bar-pullers, and Cut-Grip tooling. It includes remachining to eliminate cutting air, boundary limits, and turning and drilling canned cycle support.

### FeatureTURN/MILL™

FeatureTURN/MILL incorporates all the functionality of FeatureTURN and FeatureMILL2.5D in a single setup. It supports machines with Y, C, and B-axis milling capabilities and machines with or without polar coordinate interpolation.

### FeatureWIRE™

FeatureWIRE is programming for 2-axis, 2-axis taper, and full 4-axis wire EDM that supports Charmilles, Agie, Sodick, Fanuc, Mitsubishi, and many other wire EDM machines.

### FeatureRECOGNITION™

FeatureRECOGNITION is included with FeatureMILL3D and is an optional module with other base products. It provides single-click Automatic Feature Recognition (AFR) for entire 2D parts and full associativity for imported solid models, with import capabilities for:

- Single-click Direct CAD Model Transfer for SolidWorks and Autodesk files
- Native SolidWorks files and SolidWorks Assemblies
- Native SolidEdge and Autodesk Inventor files
- 3D Parasolid (XMT) or ACIS (SAT) solid models
- 3D IGES, DWG, DXF surface files

### Solid Modeling

Optional module for FeatureMILL2.5D, FeatureMILL3D, FeatureTURN and FeatureTURN/MILL. It also allows you to define machine designs, clamps, vises, and fixtures to show work environments.

### Tombstone Machining

This optional multi-part machining module provides support for either horizontal or vertical machines.

### 5-Axis Positioning

This optional multi-part machining module increases productivity and decreases errors by reducing re-clamping.

### Native CAD Imports

These modules provide the capability of directly importing Unigraphics, CATIA V4, CATIA V5, Pro/E, STEP and VDA files as 3D surface or solid models.

## FeatureCAM 2006 Enhancements

### Synchronized Multi-Turret Turning

Optional module that provides an excellent solution for production machining, making thousands of precision parts with reduced cycle time.

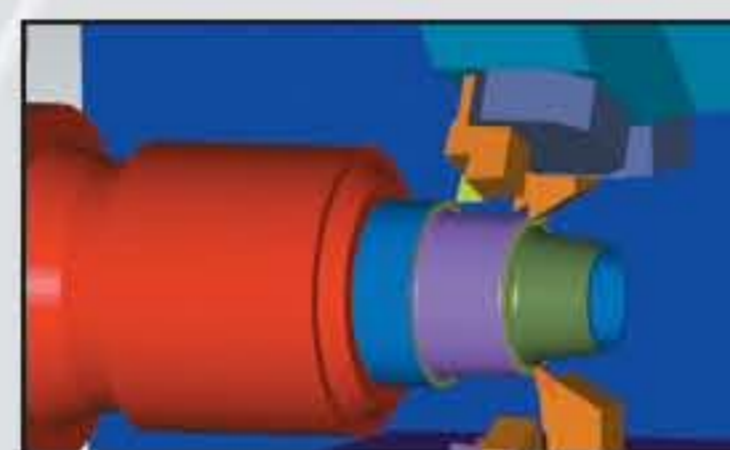
- Seamlessly integrated into FeatureCAM's existing turning programs.
- Supports 4 turrets, main spindle, sub-spindle, and numerous axes.
- Ability to move operations between spindles and turrets to achieve shortest cycle time.
- Provides a graphical, time-based view for moving around operations – eliminating the need to piece together several small NC programs.
- Outputs NC code for all major controls, including Fanuc, Okuma, Heidenhain, etc.
- Supports synchronization within the operation, such as balanced turning and synchronized roughing.

### Full Machine Simulation

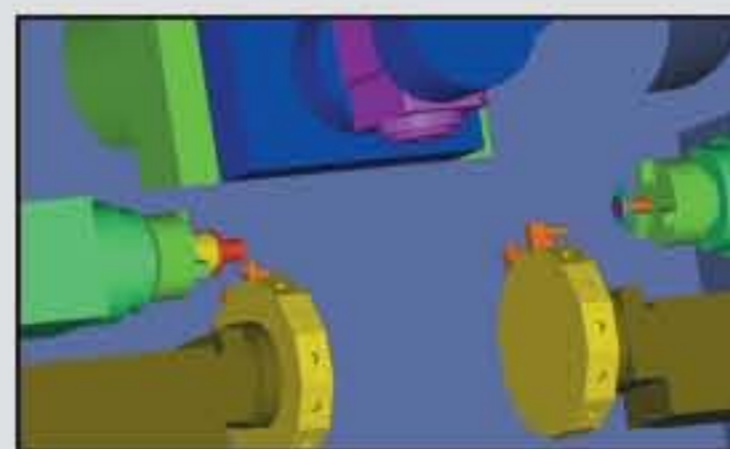
Optional module that allows you to view machine movements and detect any possible collisions, providing the assurance of a clean operation without have to stop production for dry runs. Machines can be defined using either FeatureCAM's Solid Modeling option or solid model data imported from other CAD programs. Machine design is saved and can be used with any part program.

### Other Improvements

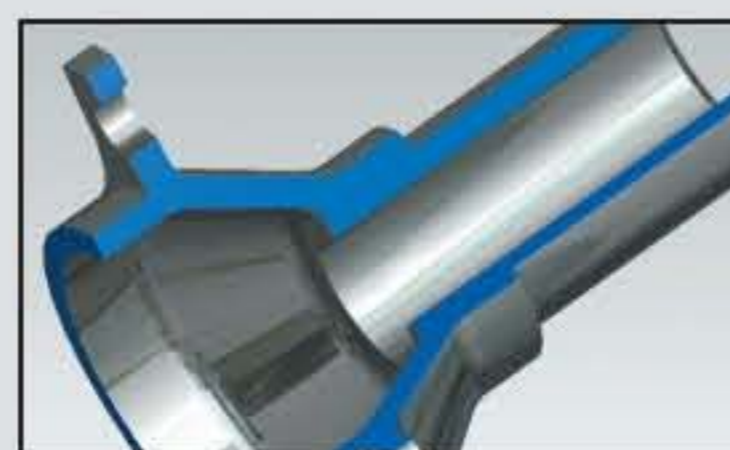
- Tooling and feed/speed databases can be effortlessly shared between networked computers.
- Support for motion controllers from 3Dconnexion, such as the SpaceBall and SpaceTraveler.
- Z-level spiral interleave toolpath and Z-level finish enhancements for fewer retractions.
- Metallic rendering in simulations.



Synchronized Multi-Turret Turning



Machine Simulation



Metallic Rendering

Your local FeatureCAM dealer

  
www.delcam.com

\* All tradenames are the property of their respective owners.

2006



autodesk  
authorized developer

Microsoft  
CERTIFIED  
Partner

EDS Solid Edge®  
Voyager Program Product  
www.solidedge.com

### Delcam USA

275 E. South Temple, Suite 305  
Salt Lake City, UT 84111  
Toll free: 888.393.6455  
Phone: 801.575.6021  
Fax: 801.575.5017  
info@featurecam.com  
www.featurecam.com